

•METRO•

HAMMERSMITH W6

metro-hammersmith.com

•METRO•

1 BUTTERWICK, HAMMERSMITH
LONDON W6 8DL

“PROGRESS IS IMPOSSIBLE WITHOUT CHANGE

**FROM THAT LIGHTBULB MOMENT TO THE
LIGHTBULBS, SOME OF THE BEST IDEAS FOR
CHANGE ARE THE MOST SIMPLE.**

Metro has been totally transformed to provide
110,000 sq ft of contemporary workspace.

It is already home to a thriving business
community which includes Weber-Stephen
Products, Hansen Technologies, Assala Energy,
Agoda International, CE Europe, Virgin Hotels
and Mindspace.



**A CONTEMPORARY REFURBISHMENT TO
CAT+ FITTED OFFICE SPACE.
AVAILABLE FROM 5,300 SQ FT.**

SPACE TO INSPIRE

- » REMODELLED CONTEMPORARY RECEPTION
- » FULLY FITTED AND FURNISHED
- » COST EFFECTIVE OPEN PLAN OFFICES
- » COMMUNAL CAFE AND WORKSPACE
- » LANDSCAPED AREAS AND OUTDOOR SEATING
- » SHOWERS AND CHANGING FACILITIES
- » PROMINENT LOCATION
- » 4 UNDERGROUND LINES AND NUMEROUS BUS ROUTES



•METRO•



VIEW THE RECEPTION VIRTUAL TOUR



OFFICE SPACE AVAILABLE FROM 5,300 SQ FT

The part second floor has been comprehensively refurbished to provide excellent fully fitted and furnished office space. The remaining floors can all be refurbished to a similar standard.

ACCOMMODATION (NIA)

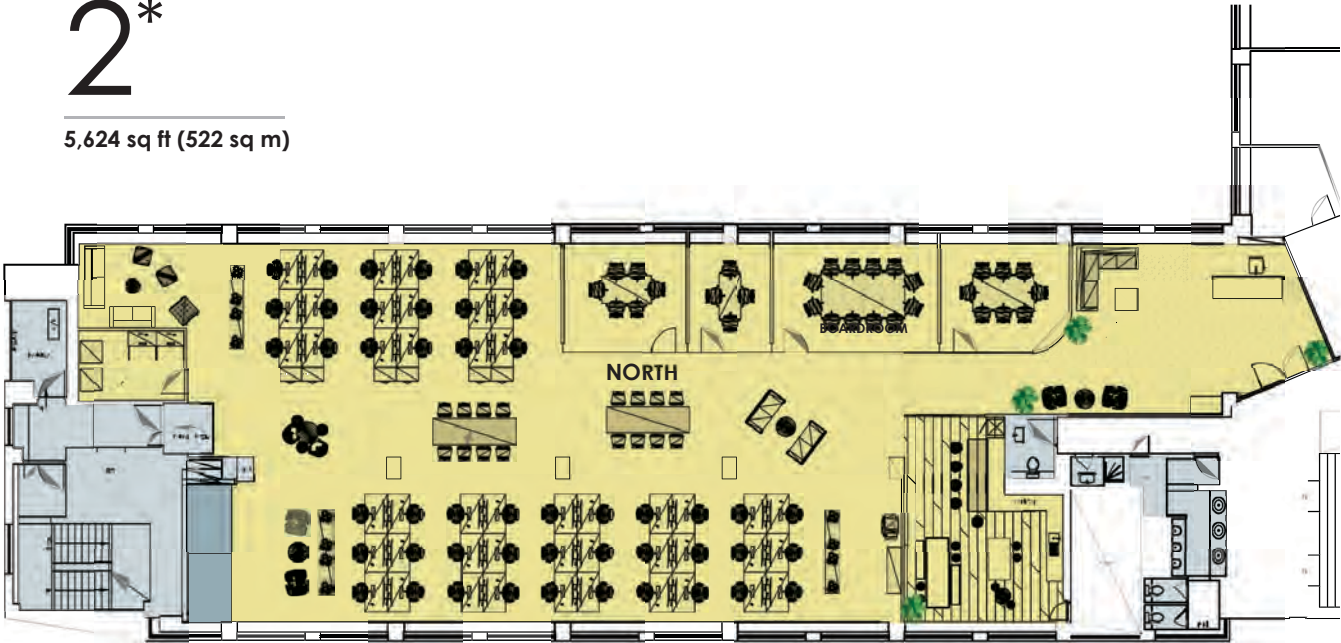
Floor	sq ft	sq m
Ninth (East)	5,523	513
Fifth	11,470	1,066
Fourth (East)	5,872	546
Fourth (North)	5,323	494
Second (North)*	5,624	522
Total	33,812	3,141

* Fully fitted and furnished



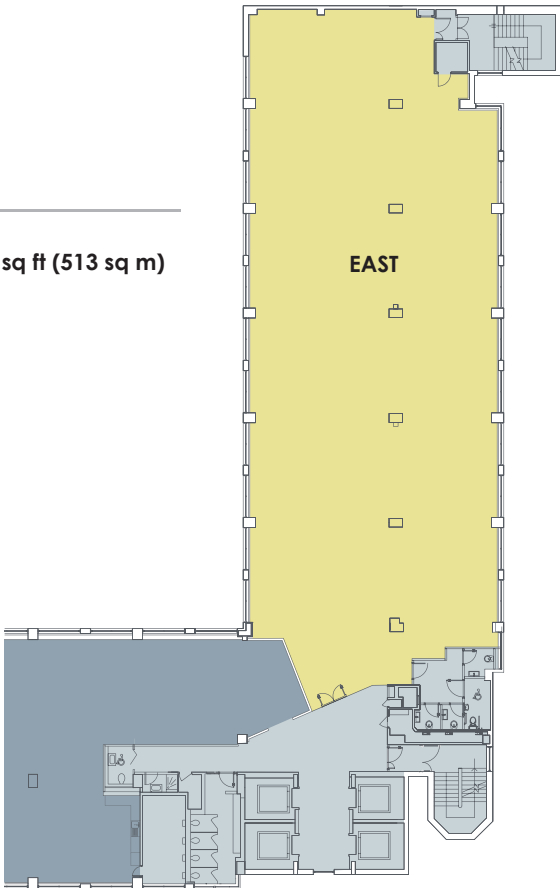
2*

5,624 sq ft (522 sq m)



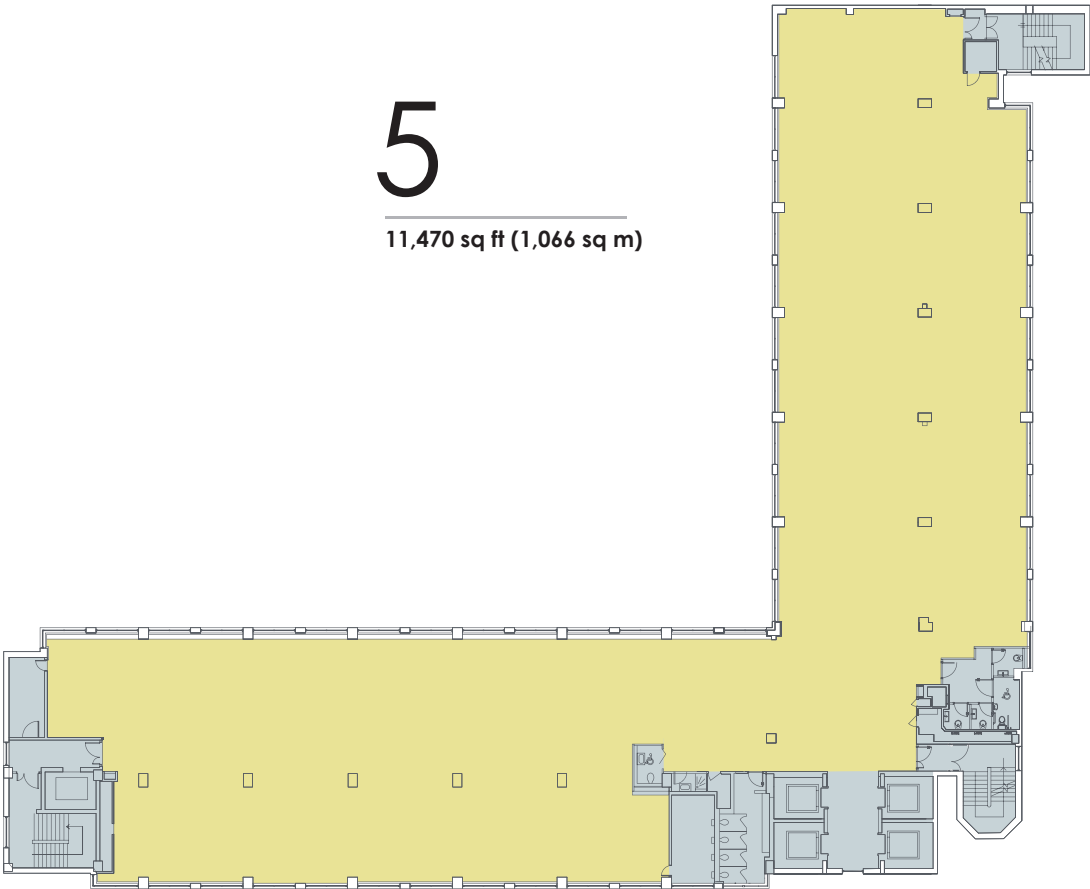
9

East
5,523 sq ft (513 sq m)



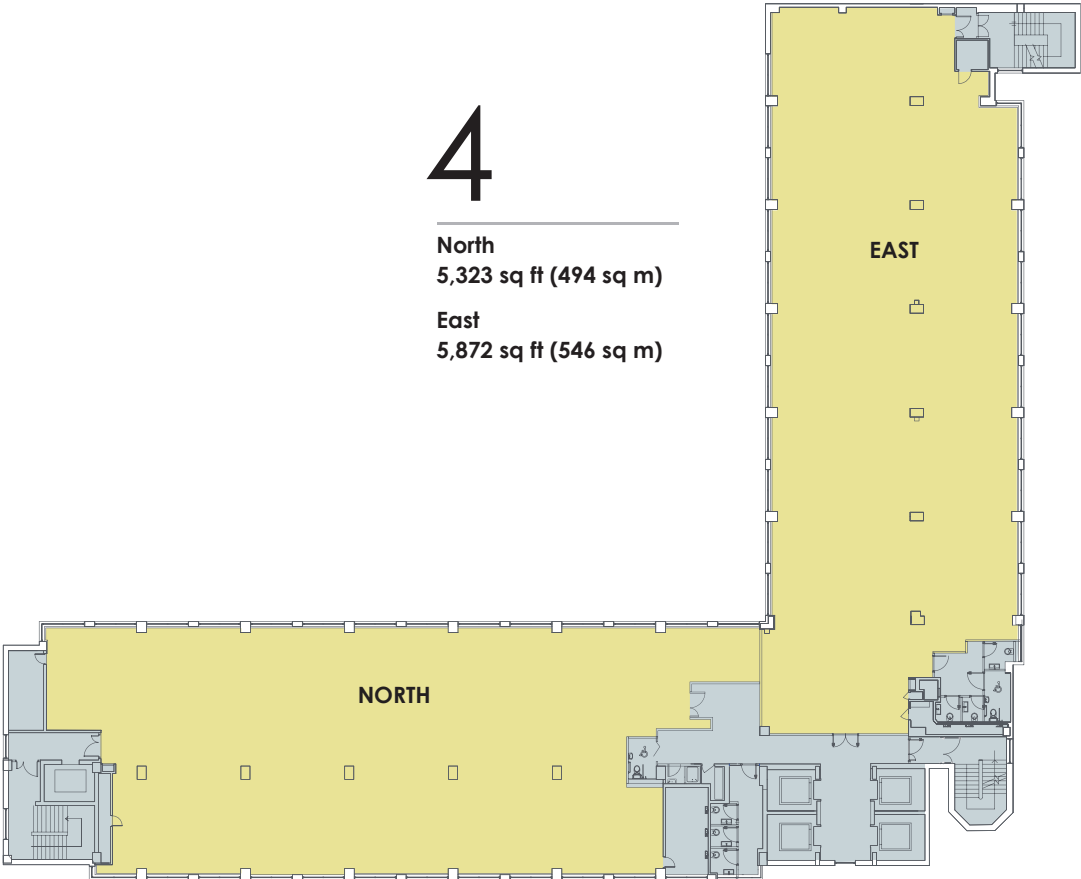
5

11,470 sq ft (1,066 sq m)

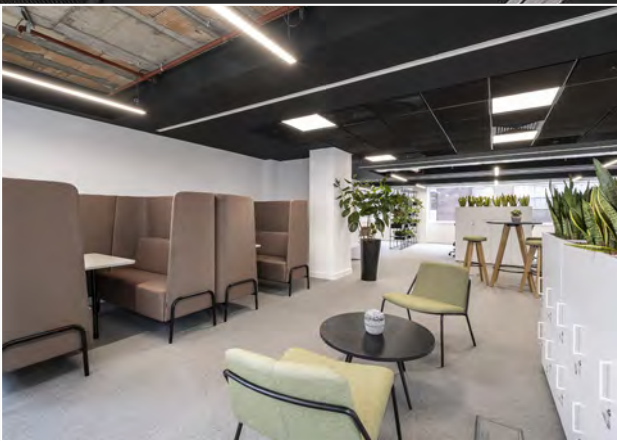


4

North
5,323 sq ft (494 sq m)
East
5,872 sq ft (546 sq m)



PART SECOND FLOOR OFFICES



VIEW THE SECOND FLOOR VIRTUAL TOUR

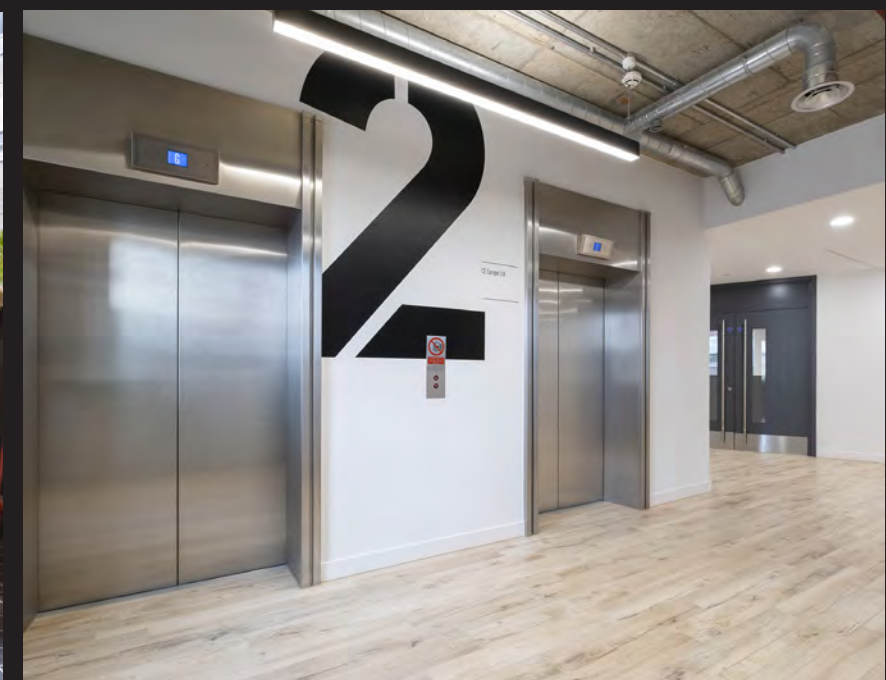




EXCEPTIONAL COMMUNAL SPACE

Metro boasts an abundance of communal break out space and an excellent on-site cafe run by 508 Coffee.

•METRO•



OUTDOOR SPACE AND URBAN PARK

Metro overlooks an urban park and benefits from new outdoor seating and recreational area at the rear of the building.



MINDSPACE RUN A BOUTIQUE
SERVICED OFFICE ON THE 6TH,
7TH AND 8TH FLOORS WHICH CAN
ACCOMMODATE START UPS AND
SME'S ON FLEXIBLE TERMS.

MEETING ROOMS AND BREAKOUT
AREAS CAN BE BOOKED BY METRO
OCCUPIERS.

METRO AMENITIES



Contemporary reception



Amenity space and Cafe



Collaborative working areas



Showers and changing facilities



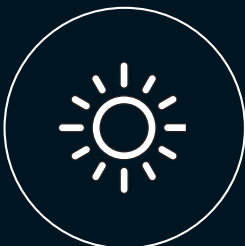
4 x 24 person lifts



24 hour security



Biofilia



Outdoor space



Secure cycle storage



Secure parking



Wellbeing



Fitwel 3*

OFFICE SPECIFICATION



Fitted and furnished offices



Reception



Open plan cost effective offices



Kitchen/ breakout area



Partially exposed ceilings with LED lighting



Air conditioning



Raised floors



New WC's



EPC:
Ground Floor B
Second Floor D

The office specification relates to the second floor which has been fitted and furnished to include a reception, meeting rooms, kitchen and furniture.

Cost effective flexible accomodation is available on the 4th, 5th and 9th floors.

GET YOUR KICKS IN W6

Working in the hub of Hammersmith you are only a short walk from the many amenities close by.

Enjoy the bustle of street food in Lyric Square, pop out for a quick coffee or enjoy the tranquil setting of the Thames.

At night the pubs, restaurants and bars come alive and you can finish your day watching groundbreaking theatre at the Lyric or bands playing live at the legendary Hammersmith Apollo.

↓ **A London landmark**
One of London's most recognisable bridges.



← **Coffee culture**
Coffee to go or catch up in the many bars.

↓ **Thameside tranquility**
Go for lunch and watch the boats go by.



← **Historic Pubs**
So many choices to enjoy your favourite tipple.



↑ **Eventim Apollo**
An historic music & entertainment venue.



↑ **Westfield**
A short journey to your one stop shop with over 350 retailers.



← **River sport**
Some of the oldest rowing clubs nearby.



← **Michelin Star Restaurant**
The River Café is an iconic Italian restaurant.

→ **Fitness for all**
Fitness clubs to suit you.



↑ **Retail therapy**
A short walk to the latest fashions.



↑ **Lyric Theatre**
Eat, drink and watch groundbreaking productions.



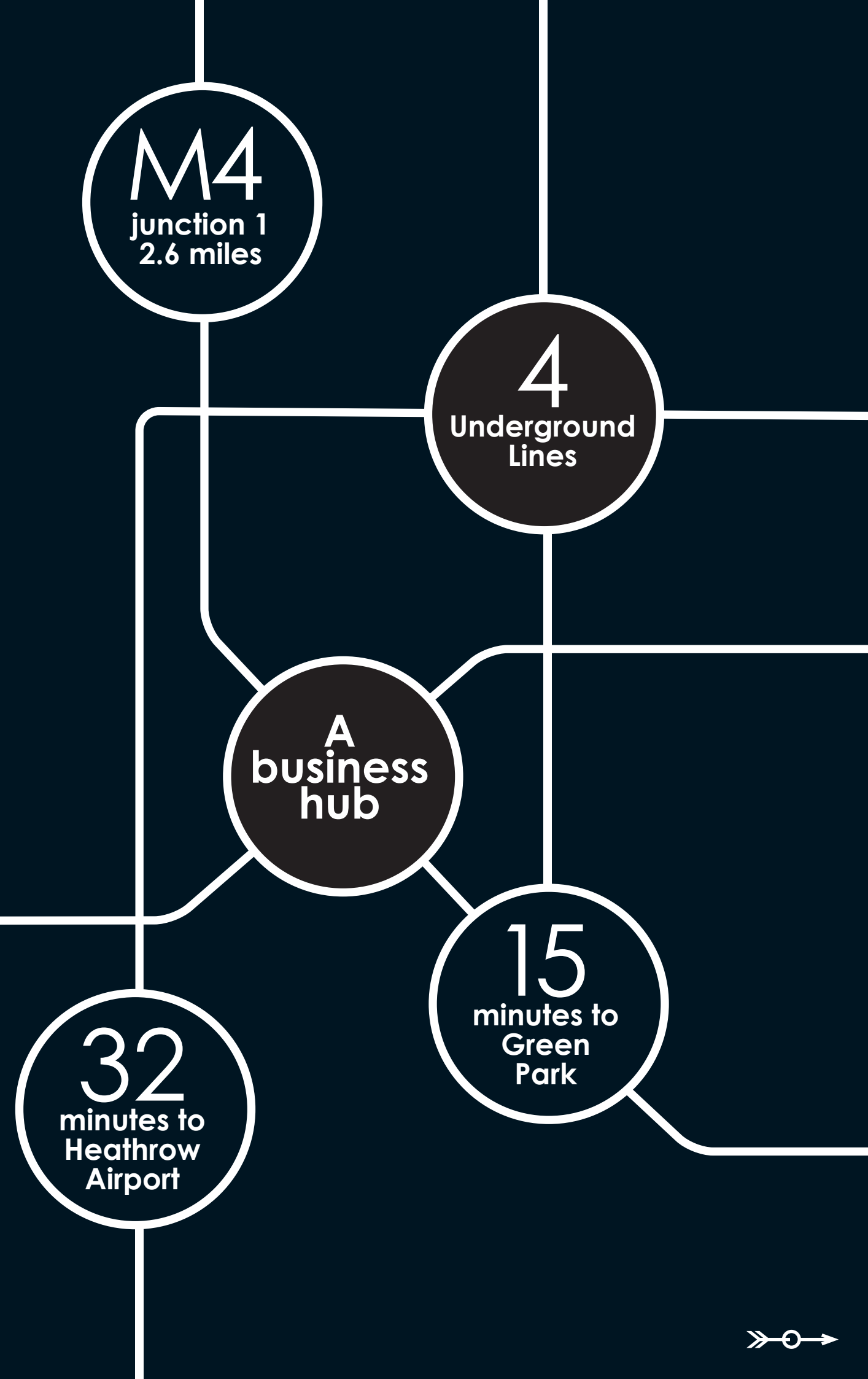
↑ **Outdoor markets**
Enjoy fresh farm produce at the weekly market and world cuisine amongst the street food stalls.



← **Outdoor spaces**
For an informal meet or unwind after work.

HOW WELL CONNECTED IS YOUR BUSINESS?

There is a very good reason why Hammersmith is a global business destination - it's so well connected.



ON YOUR
DOORSTEP
AND
BEYOND

With so much close by you
really are spoilt for choice.

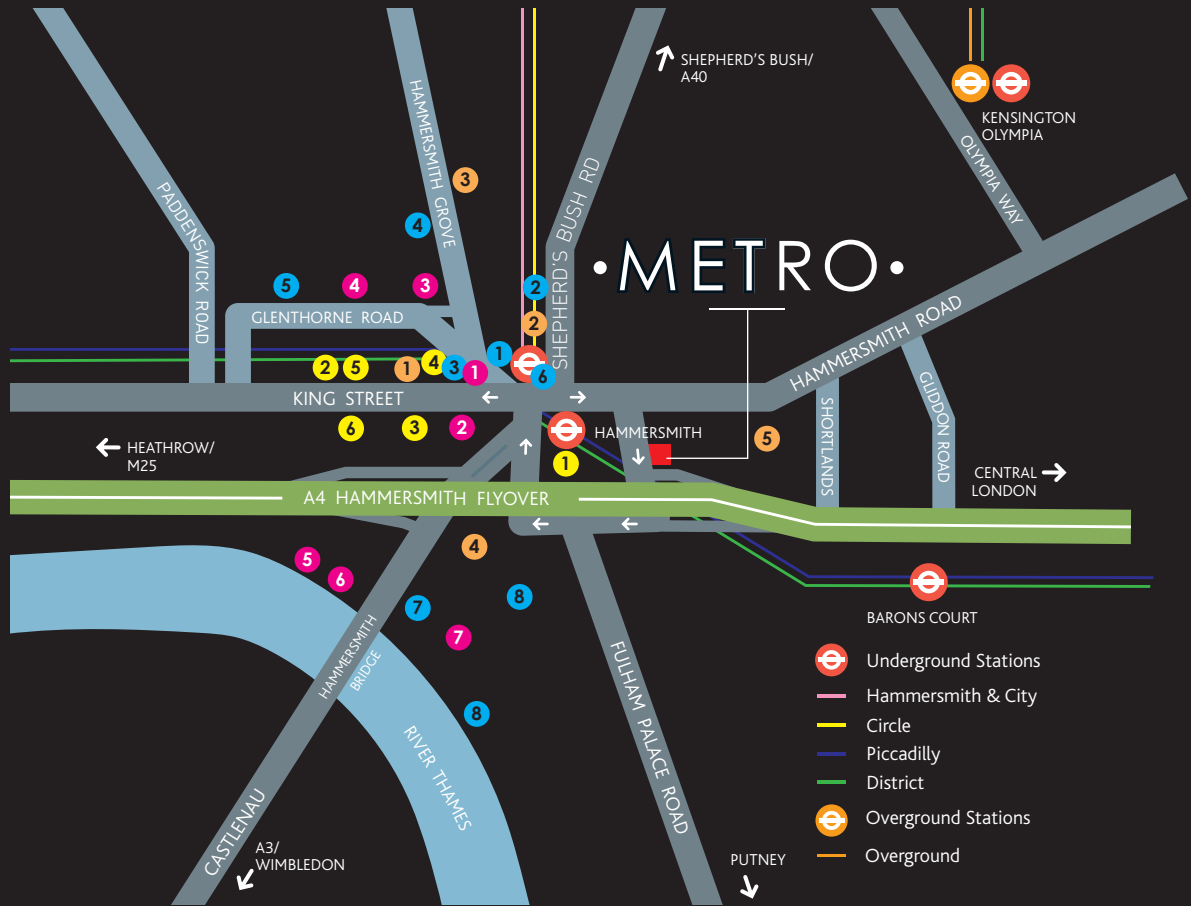
Within minutes you can be in
the the City for business
or the enjoying the bright lights
for a night out in the West end.

In 32 minutes, by underground, you can be at Heathrow, one of the world's busiest airports with 80 airlines flying to over 180 destinations.

Prefer to take the car the M4 motorway is only 3.2 miles away giving you fast access around London and beyond.

BY ROAD

Chiswick	2.5 miles
M4 (J1)	3.2 miles
West End	3.8 miles
City	6.4 miles
Heathrow Airport	11.8 miles
M25	12.4 miles



Retail

- 1 The Broadway
- 2 King's Mall
- 3 Marks & Spencer
- 4 Lyric Square
- 5 Primark
- 6 TK Maxx

Restaurants & Cafés

- 1 Bill's & Byron
- 2 Wagamama
- 3 Le Petite Bretagne
Creperie
- 4 Bertotti
- 5 Poppy's Thai
- 6 Nando's
- 7 Riverside Studios
- 8 The River Café

- 1 The Swan
- 2 The Hop Holes
- 3 Dartmouth Castle
- 4 Stonemasons Arms
- 5 The Rutland
- 6 Blue Anchor
- 7 The Chancellors

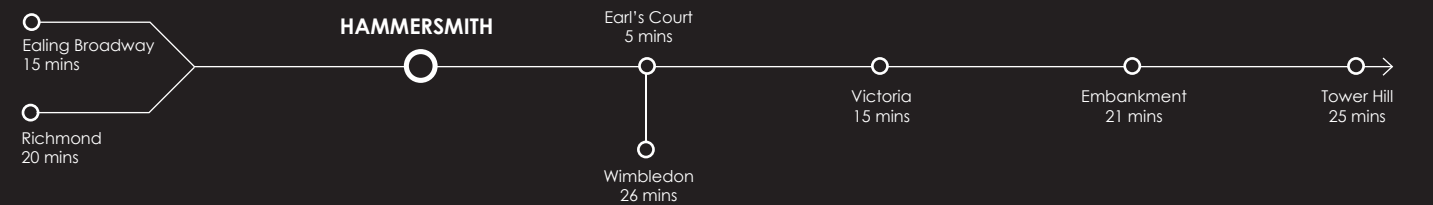
Fitness & Leisure

- 1 Lyric Theatre
- 2 Pure Gym
- 3 Fitness First
- 4 Hammersmith Apollo
- 5 Virgin Active

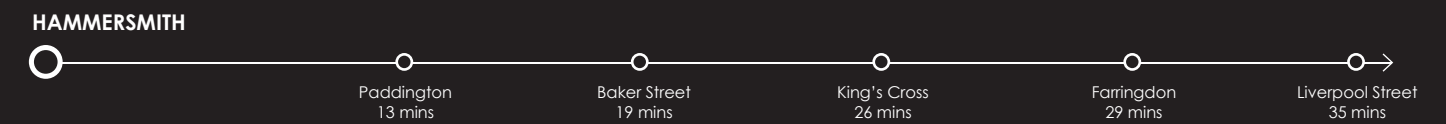
Piccadilly Line



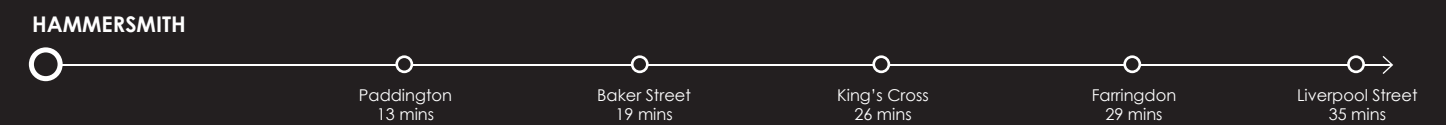
District Line



Hammersmith & City Line



Circle Line





Paddington
Station

Kensington
Olympia

Hyde Park

West End

The City

The Shard

Docklands

Battersea
Power
Station

THE METROPOLIS

Hammersmith plays a major part in the Capital City as a significant economic, political, and cultural centre.

Another reason why there are such a diverse range companies choosing Hammersmith as their UK base.

•METRO•

NOVOTEL HOTEL

PREMIER INN

BUS STATION



HAMMERSMITH



HAMMERSMITH

EVENTIM APOLLO

LOCAL OCCUPIERS

- 1 Dunnhumby
- 2 Siemens
- 3 Medidata
Wework
CAA
Perform Media
- 4 Winton Capital
- 5 The Office Group
- 6 Fox International Channels
UKTV
Philip Morris
Accor Hotels
- 7 A&E Networks
Kambi Sport
- 8 Victoria Beckham
- 9 Etihad Airlines
- 10 Hana
Achilles
- 11 Formula E
Love Holidays
Hammersmith & Fulham B. C.
- 12 Immediate Media
- 13 Harrods
- 14 Virgin Media
- 15 GE
- 16 Disney

METRO•



• METRO •

HAMMERSMITH W6



PATRIZIA



ALCHEMY
ASSET
MANAGEMENT



Richard Harding

richardharding@brayfoxsmith.com
07730 817019

Matthew Smith

matthewsmith@brayfoxsmith.com
07436 976049



Edward Smith

edward.smith@realestate.bnpparibas
07836 656538

James Little

james.little@realestate.bnpparibas
07350 404732

Under Court references Cr-2025-003185 and CR-2025-003186, James Hawksworth and Glen Carter of RSM UK Restructuring Advisory LLP were appointed as Joint Administrators of Rackspring TransEuropean VI Hammersmith Metro (Jersey) Limited and Metro Shared Office Space Limited ("the Companies") on 9 May 2025.

Please note that Joint Administrators act as agents of the Companies. **The affairs, business and property of the Companies are being managed by the Joint**

Administrators who act as agents of the Companies and without personal liability.

For further information, please contact manchester.restructuring@rsmuk.com or call on +44 161 830 4000.